

- The laminator can laminate film between the thicknesses of 80-150microns.
 - The laminator works with most types of heat-sealing laminating pouches.
4. Insert the sealed edge of the laminating pouch directly into the laminator opening until it is caught and drawn in (no carrier is required), take care to ensure that the document is straight and centrally positioned.
 5. Remove the pouch from the rear of the machine after it has stopped moving.

ROLLER RELEASE BUTTON

1. If a pouch jams in the laminator, slide the power switch to off, switch off and remove the mains plug.
2. Press the roller release button on the back of the laminator and gently pull the pouch out of the entry slot.
3. Do not insert tools or other objects into the entry slot as this may damage the rollers.

MAINTENANCE

- Do not operate the laminator more than 2 hours at a time. Wait at least 15 seconds between every laminating items. Allow the laminator to cool at least 30 minutes after turning off.
- Do not touch or place anything on hot the surfaces, wait for the unit to cool before moving or cleaning.

CARE AND CLEANING

To reduce the risk of fire or electrical shock, do not open the unit. No user serviceable parts are inside.

- Keep your hands and the cord away from hot parts of the appliance during operation.
- Since deposits can built up over a period of time please clean the rollers periodically after use by inserting a

folded A3 sheet of paper into the feeding slot of the laminator (folded edge first). The paper will come out with any residue present. Repeat several times to clean the roller.

- Never clean with scouring powders or hard implements.
- Wipe clean with a soft cloth.

SUGGESTED USES

Photographs	Legal documents
Recipe cards	Letters
Membership cards	Point of sale
Fishing license	Luggage tags
Certificates	Homemade bookmarks

TECHNICAL DATA

Voltage	-----	240V/50~60Hz
Power	-----	Max. 400W
Current	-----	1.6A
Film thickness	-----	80-150 micron
Max. document size	-----	A3 size
Warm up time	-----	Approx.5-6 min
Laminating speed	-----	Approx.24~25cm/min
Max. document thickness	-----	0.4mm

POUCH SPECIFICATIONS

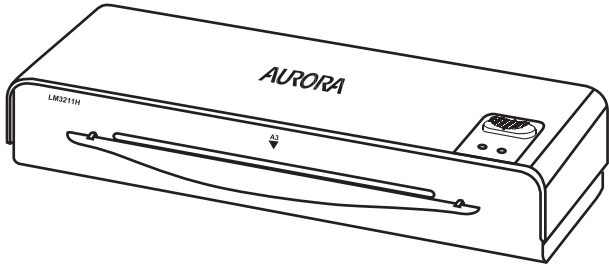
1. Please make sure that enough margin (3-9 mm) is left between the item to be laminated and the edge of the pouch.
2. Do not trim the pouch prior to laminating.
3. Please ensure that good quality pouches of the specified thickness (stated above) are used, as this will reduce the risk of jamming and prolong the life of the laminator.

AURORA

A3 HOT LAMINATOR

Operating Instruction

LM3211H



Please read the instruction before using the unit.

----- **SAVE THESE INSTRUCTIONS** -----

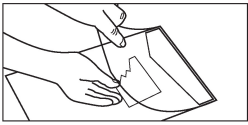
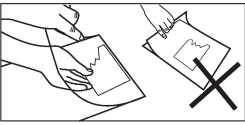
INTRODUCTION

Congratulations on the purchase of your laminator. Now you can protect your favourite documents up to A3 size such as photographs, certificates, ID cards, letters etc. in a water resistant, airtight seal. Follow the instructions for proper use and keep this manual for future reference.

IMPORTANT SAFEGUARDS

When using electrical appliances, basic safety precautions should always be observed including the following:

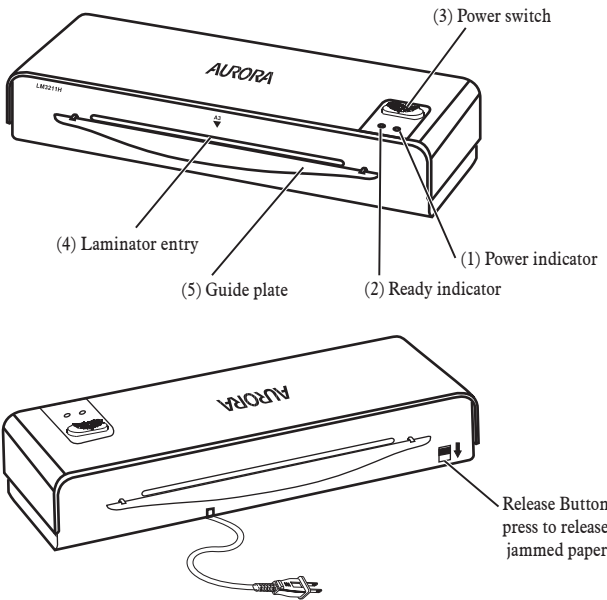
1. Read all instructions.
2. Do not touch hot surfaces.
3. To protect against risk of electrical hazards, do not immerse cord, plugs or the appliance in water or other liquid.
4. Close supervision is necessary when the appliance is used near children.
5. Unplug from the outlet when not in use and before cleaning. Allow to cool before cleaning the appliance.
6. Do not operate any appliance with a damaged cord or plug or after the appliance malfunctions, or has been damaged in any manner.
7. Do not use outdoors.
8. Do not use the appliance for anything other than the intended use.
9. Ensure the laminator is turned off when you have finished laminating.
10. The mains socket should be near the equipment and be easily accessible.
11. Do not laminate sheets containing metal or conductive materials.
12. If you are laminating a small or irregular shape, please insert a 2cm/3cm strip of paper against the closed end of the pouch as shown in the diagram, to prevent jamming.



A short power cord may be provided with this appliance to reduce hazards resulting from becoming entangled in or tripping over a longer cord. Extension cords may be used if care is exercised in their use. If an extension cord is used, the following must apply:

- a. The marked electrical rating should be at least as great as the electrical rating of the appliance.
- b. The extension cord should not drop over the counter top or tabletop where it can be pulled on by children or tripped over accidentally.

PART NAME



NOTES

- We do not recommend laminating any type of self-developing photo.
- Any photo to be laminated must be dry before processing.
- Do not laminate any documents that appear thick or heavy, as this will get stuck in the laminator (with the thickness thicker than 0.4mm).
- Very thin paper inserted into very a thin pouch may cause twists and jam the laminator.
- In order to avoid creasing, please DO NOT insert the open side of the film into the laminator first.
- When the film exits after being laminated, it may be very hot and soft . Handle the newly laminated item with care. Pressing the item with a book or other heavy objects may help.
- This product bonds the laminate sleeve to the item being processed .It is a permanent seal and cannot be removed.
- We do not recommend laminating any collector’s items of value or any item you may wish to remove at a later date. Do not attempt to laminate coins or thicker items.

HOW TO USE

1. Insert the mains plug into an electric socket and slide the power switch to the left or right based on the pouch you use. The POWER indicator will light up.
2. Wait 5-6 minutes for the machine to warm up. Once it has reached laminating temperature, the READY indicator will light up.
3. Place the item to be laminated into the laminating pouch, and centre it within the pouch. Please ensure that your document or picture is positioned as close to the sealed edge as possible ensuring there is a margin of 3-9 mm left between the item to be laminated and the edge of the pouch.